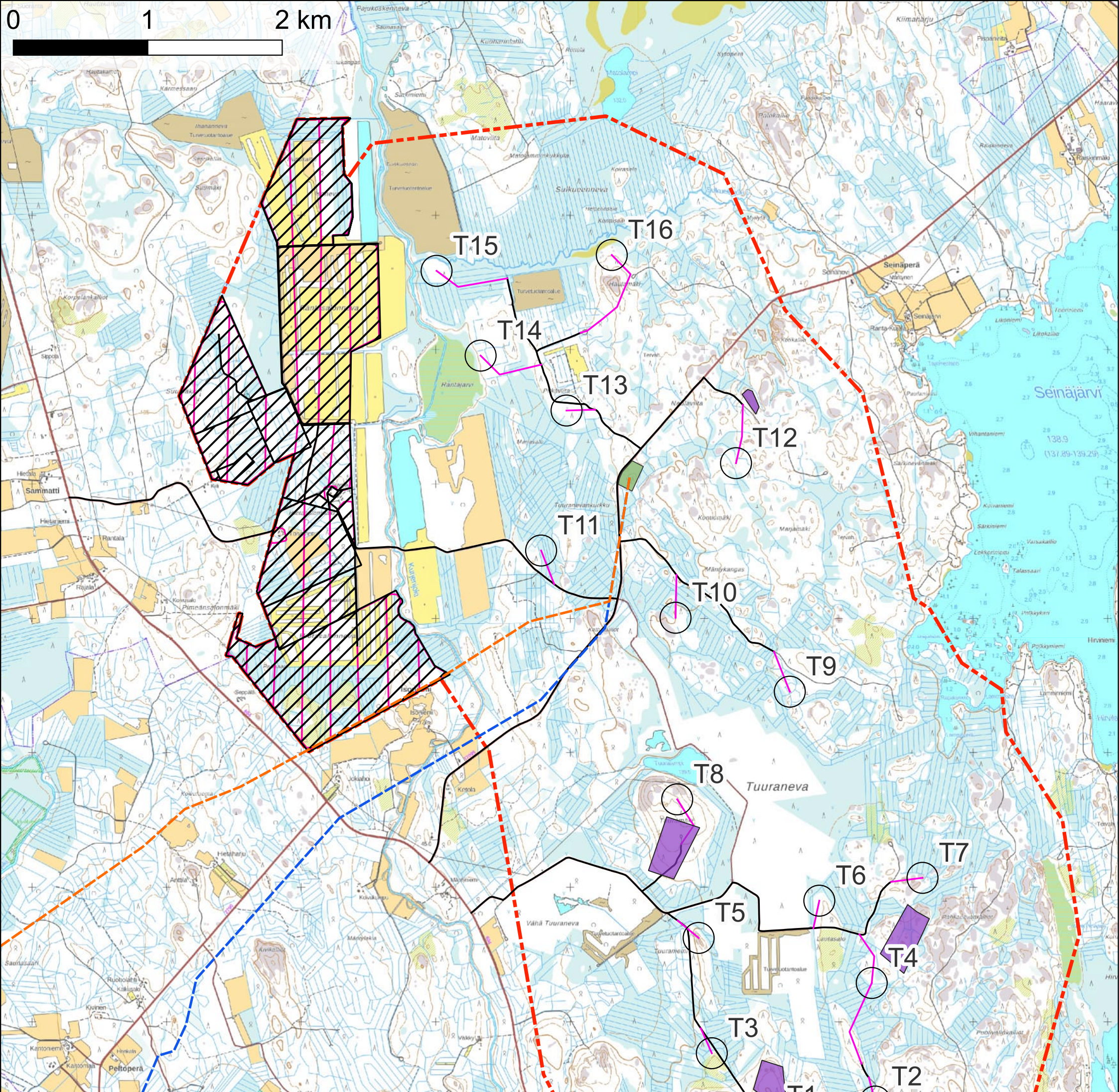


The logo for FCG, consisting of the letters 'FCG' in a bold, dark teal font, followed by a small orange circle.


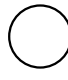

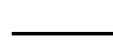
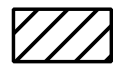




Finnish
Consulting
Group

Tuuramäen tuuli- ja aurinkovoimahanke, Virrat

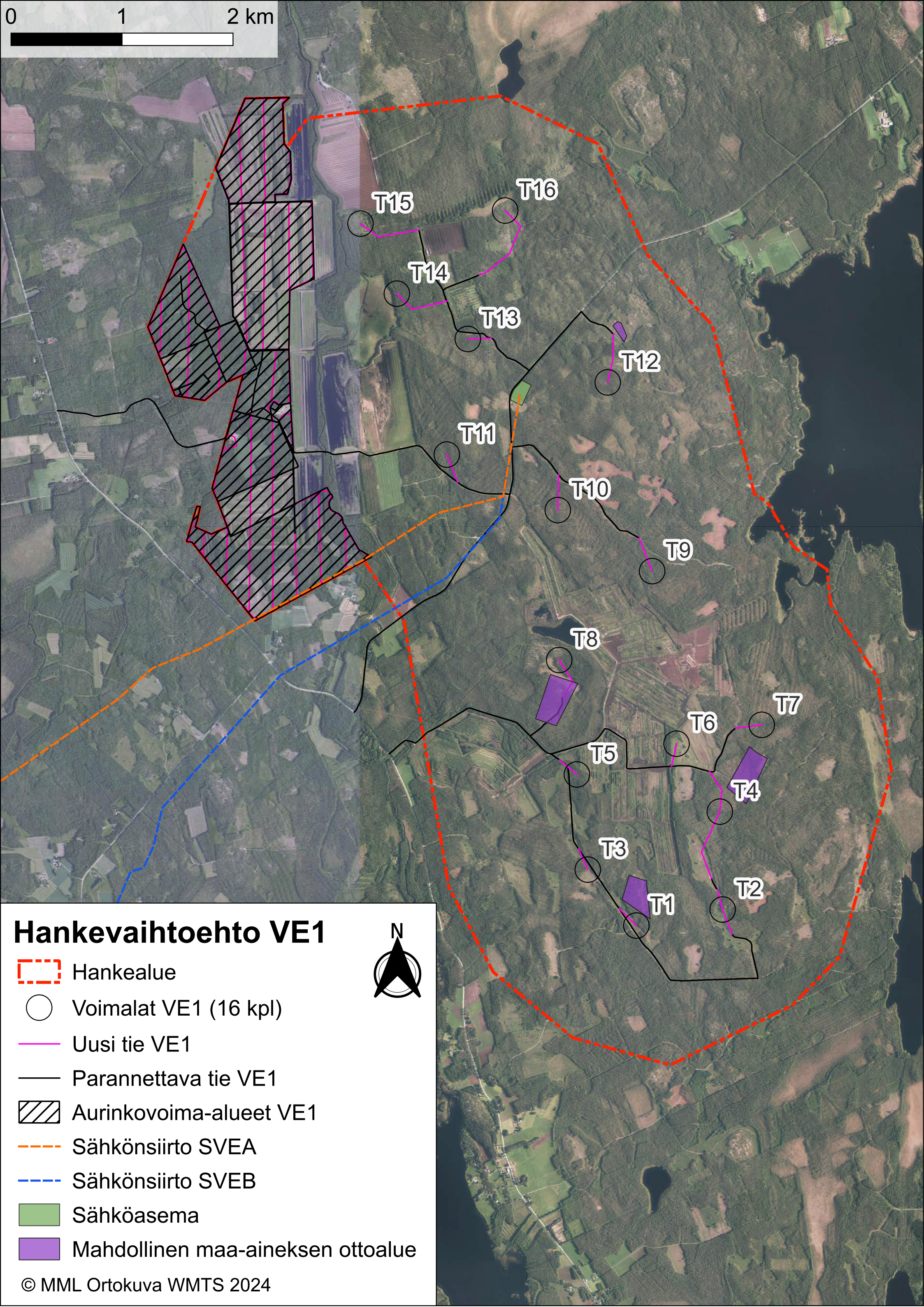
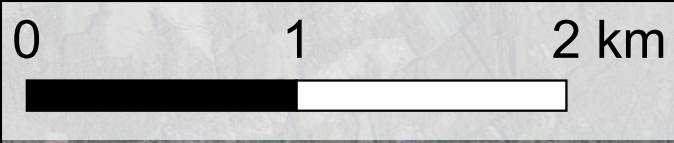
LIITE 3: AURINKOVOIMALA-ALUEIDEN RAKENNUSPAIKAT JA HUOLTOTIET




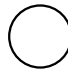

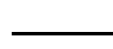
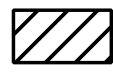




Hankevaihtoehdo VE1

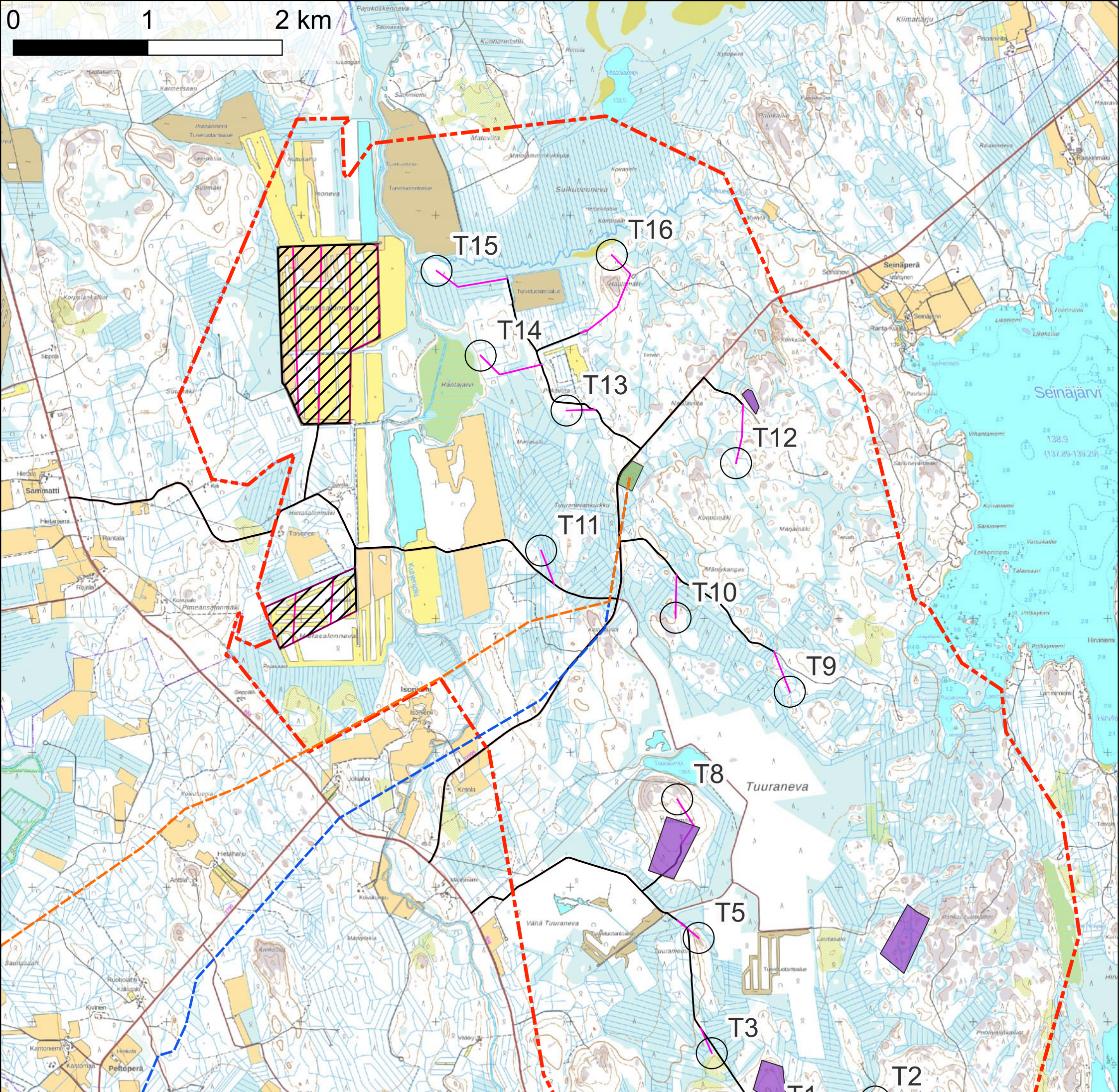
-  Hankealue
-  Voimalat VE1 (16 kpl)
-  Uusi tie VE1
-  Parannettava tie VE1
-  Aurinkovoima-alueet VE1
-  Sähkönsiirto SVEA
-  Sähkönsiirto SVEB
-  Sähköasema
-  Mahdollinen maa-aineksen ottoalue




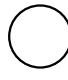

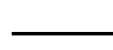
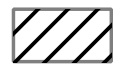






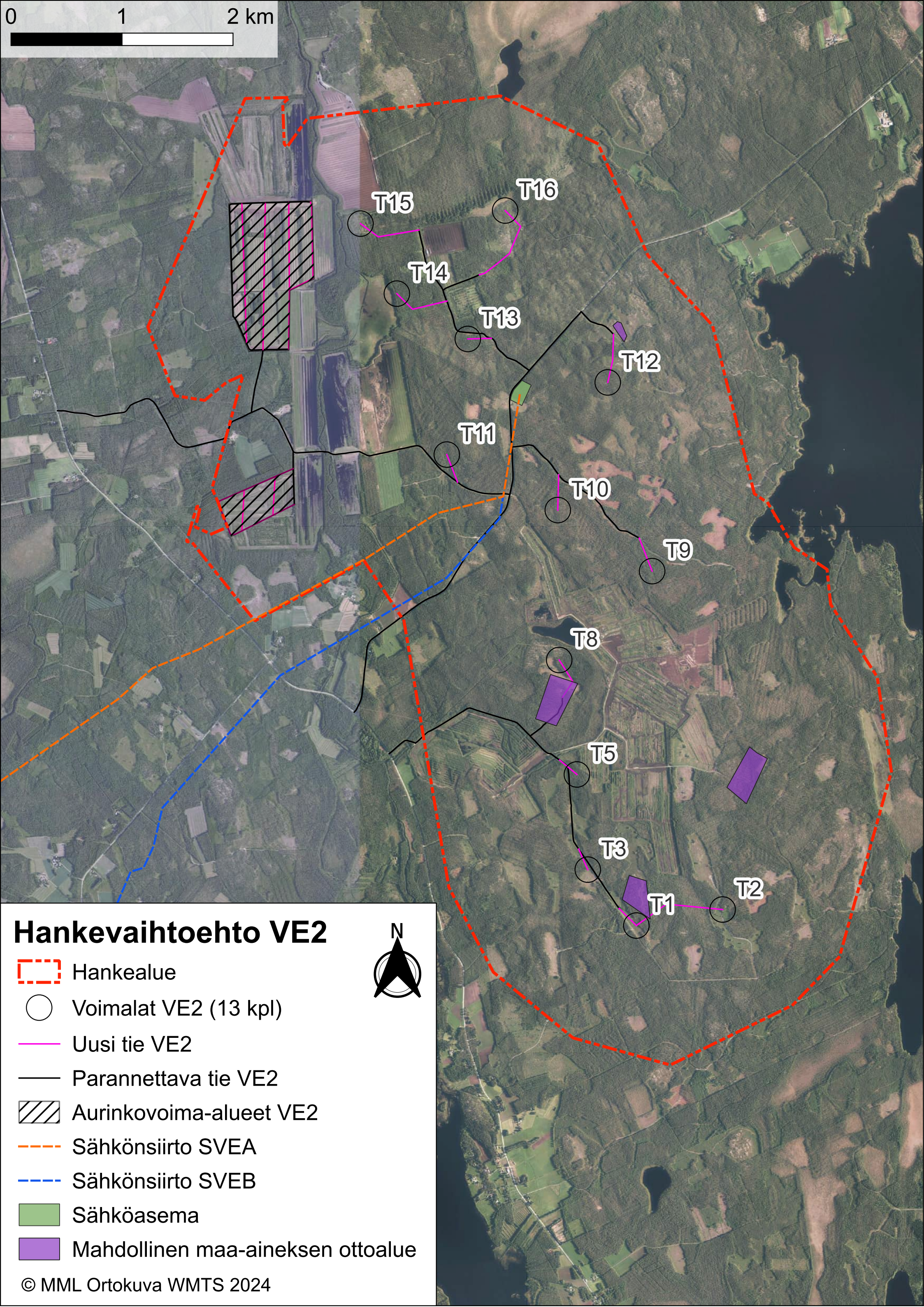
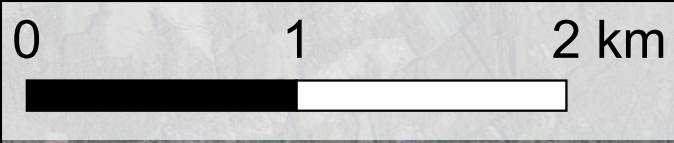
Hankevaihtoehto VE1

-  Hankealue
-  Voimalat VE1 (16 kpl)
-  Uusi tie VE1
-  Parannettava tie VE1
-  Aurinkovoima-alueet VE1
-  Sähkönsiirto SVEA
-  Sähkönsiirto SVEB
-  Sähköasema
-  Mahdollinen maa-aineksen ottoalue


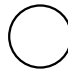

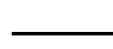
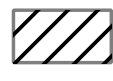






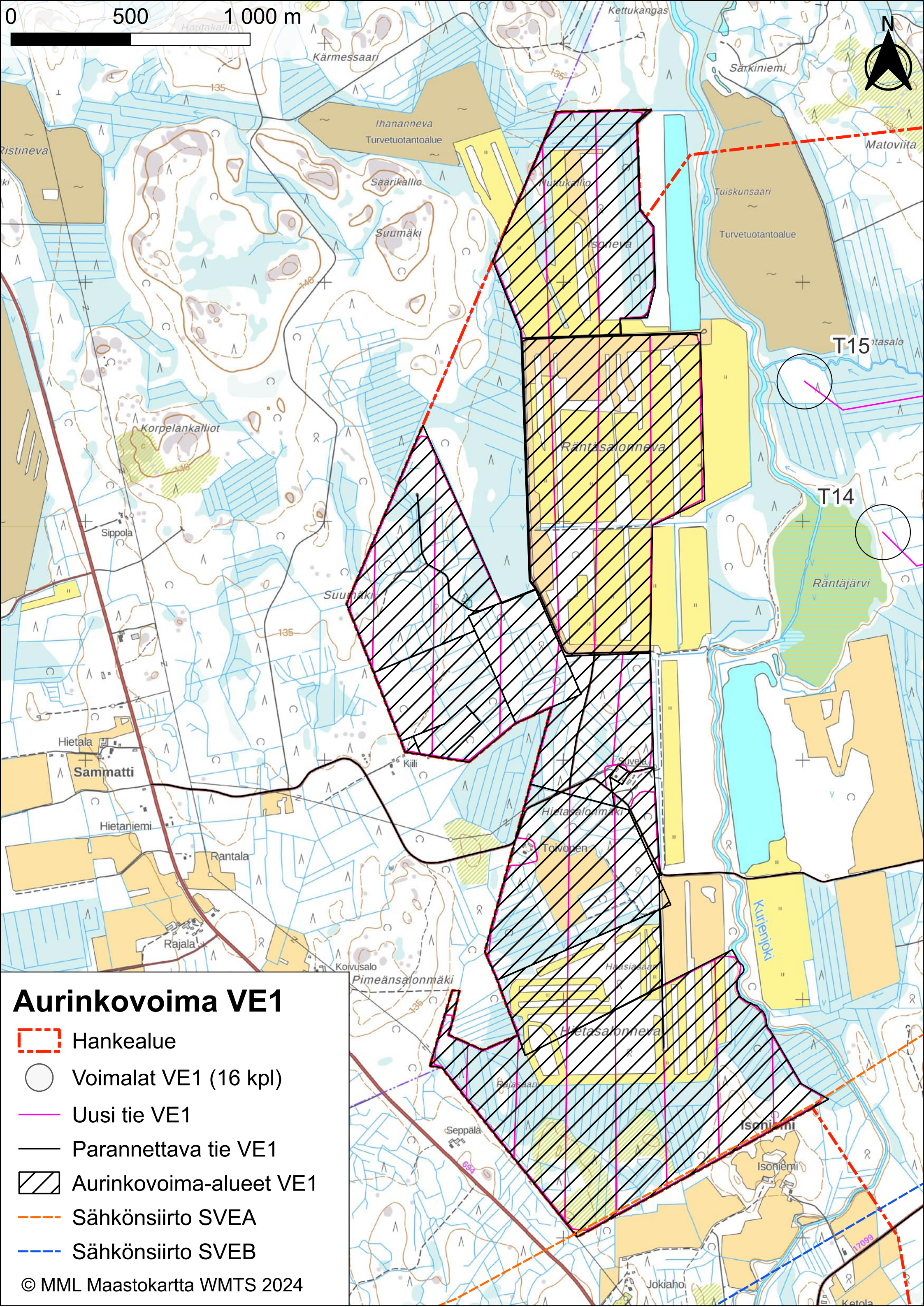
Hankevaihtoehdo VE2

-  Hankealue
-  Voimalat VE2 (13 kpl)
-  Uusi tie VE2
-  Parannettava tie VE2
-  Aurinkovoima-alueet VE2
-  Sähkönsiirto SVEA
-  Sähkönsiirto SVEB
-  Sähköasema
-  Mahdollinen maa-aineksen ottoalue





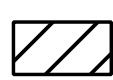




Hankevaihtoehto VE2

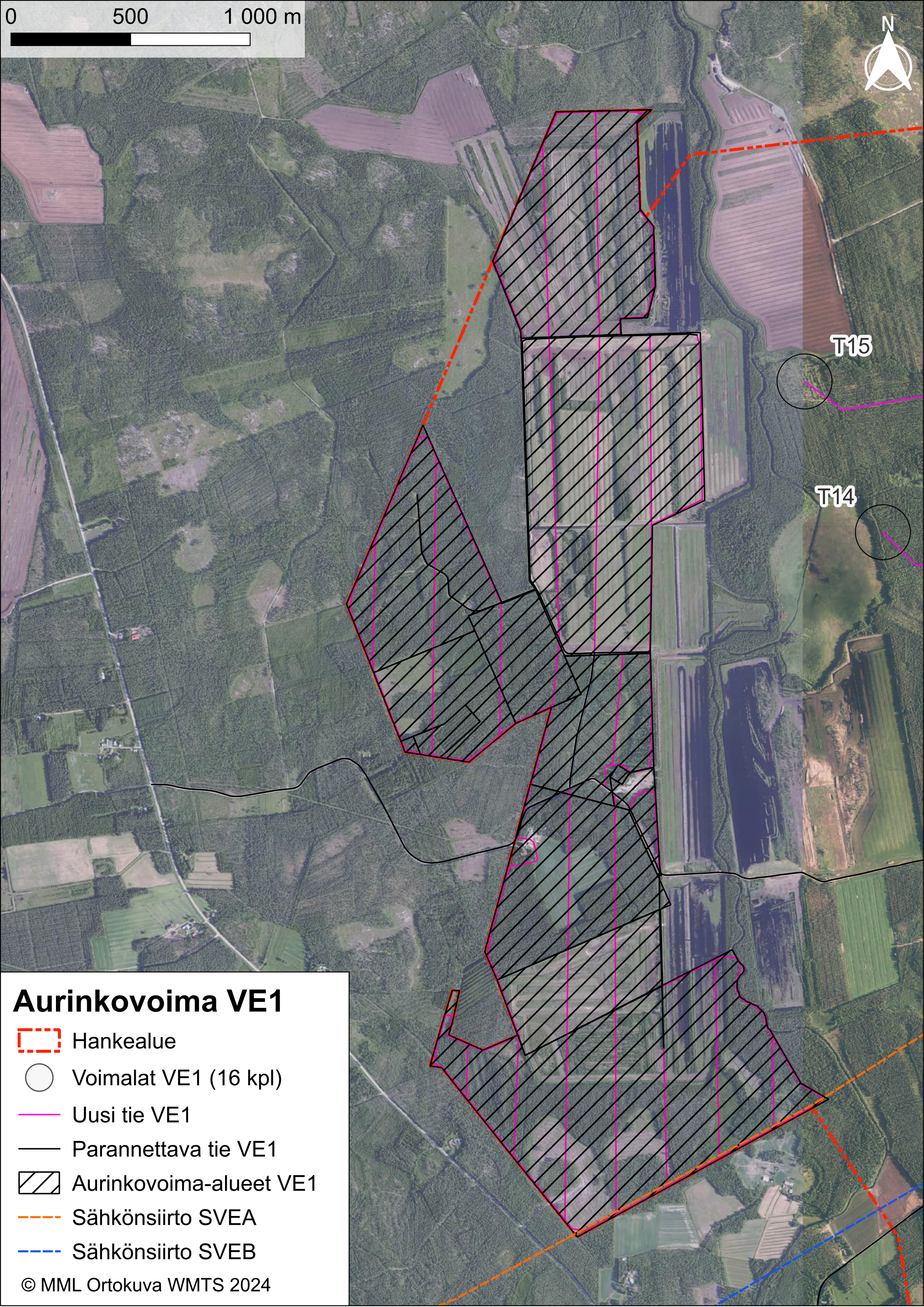
-  Hankealue
-  Voimalat VE2 (13 kpl)
-  Uusi tie VE2
-  Parannettava tie VE2
-  Aurinkovoima-alueet VE2
-  Sähkönsiirto SVEA
-  Sähkönsiirto SVEB
-  Sähköasema
-  Mahdollinen maa-aineksen ottoalue



Aurinkovoima VE1

-  Hankealue
-  Voimalat VE1 (16 kpl)
-  Uusi tie VE1
-  Parannettava tie VE1
-  Aurinkovoima-alueet VE1
-  Sähkönsiirto SVEA
-  Sähkönsiirto SVEB





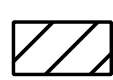


0 500 1 000 m

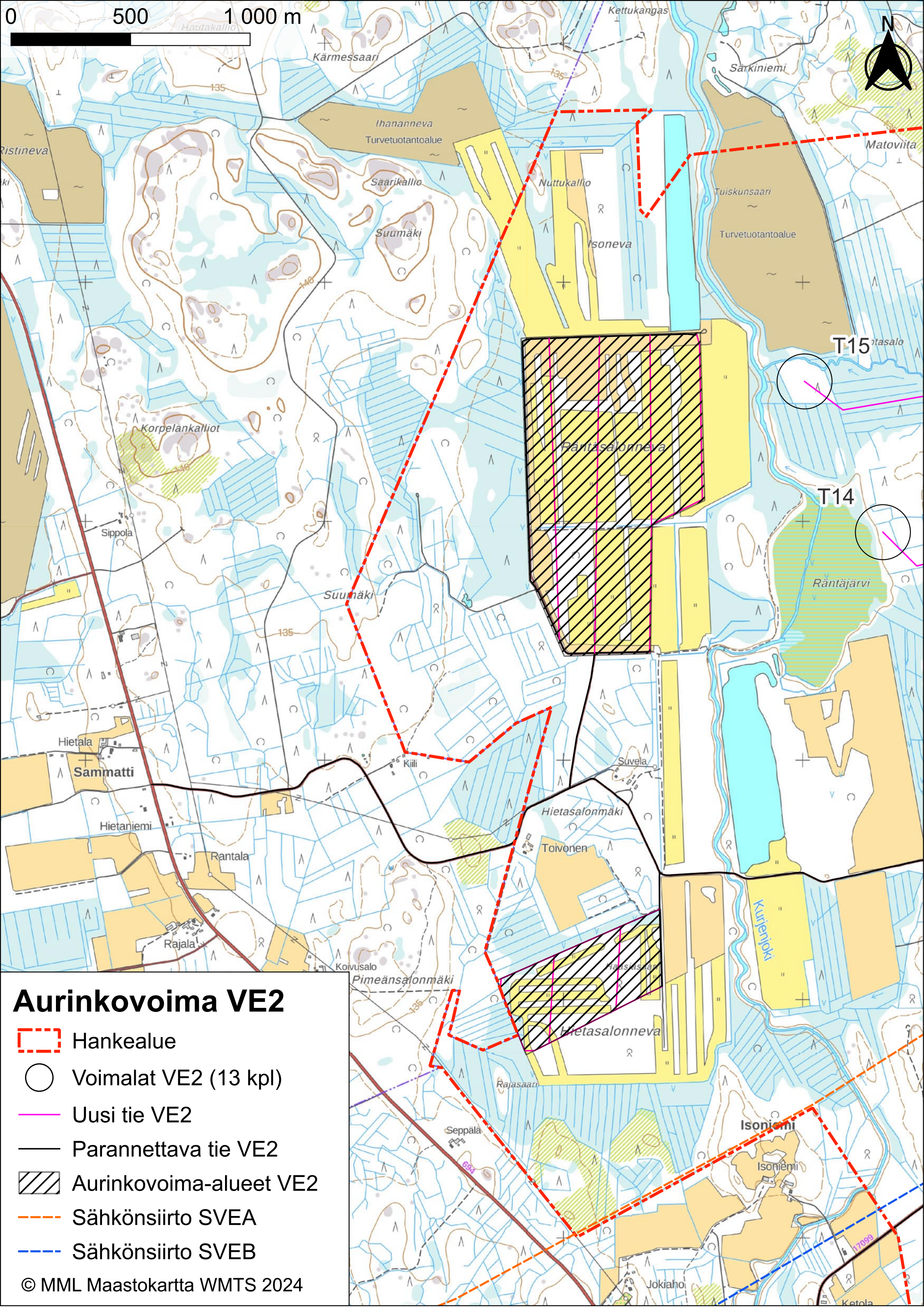


T15

T14

Aurinkovoima VE1




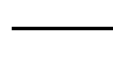



-  Hankealue
-  Voimalat VE1 (16 kpl)
-  Uusi tie VE1
-  Parannettava tie VE1
-  Aurinkovoima-alueet VE1
-  Sähkösiirto SVEA
-  Sähkösiirto SVEB



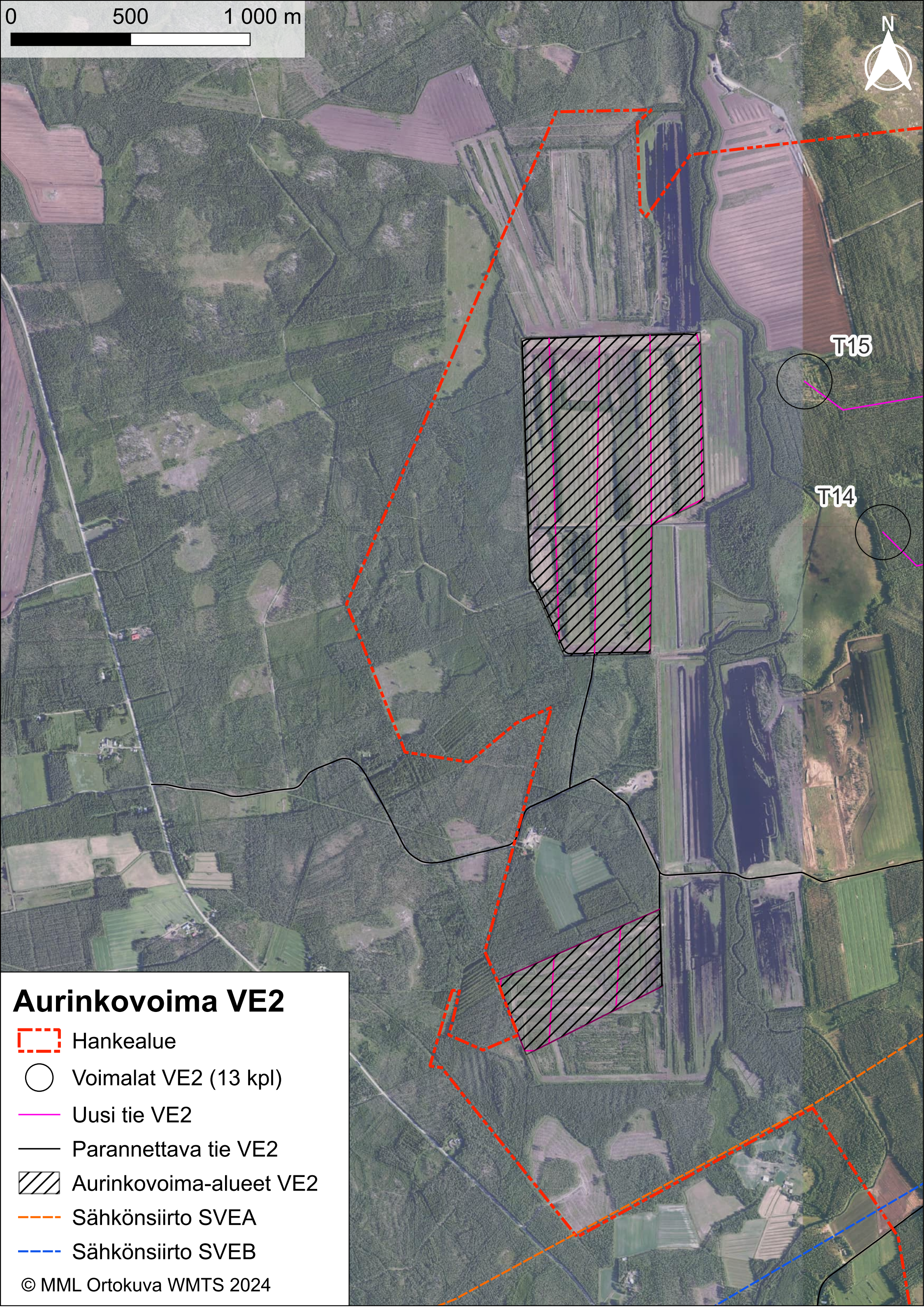
0 500 1000 m



Aurinkovoima VE2

-  Hankealue
-  Voimalat VE2 (13 kpl)
-  Uusi tie VE2
-  Parannettava tie VE2
-  Aurinkovoima-alueet VE2
-  Sähkönsiirto SVEA
-  Sähkönsiirto SVEB


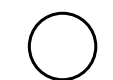


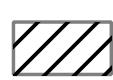


© MML Maastokartta WMTS 2024



T15

T14

Aurinkovoima VE2

-  Hankealue
-  Voimalat VE2 (13 kpl)
-  Uusi tie VE2
-  Parannettava tie VE2
-  Aurinkovoima-alueet VE2
-  Sähkösiirto SVEA
-  Sähkösiirto SVEB